

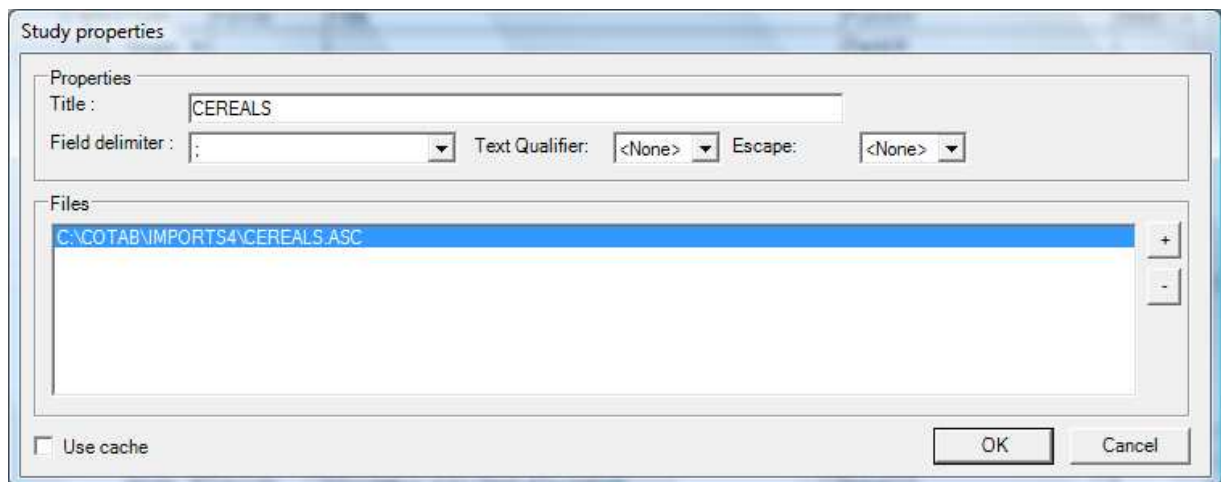
VoxcoTab Release 2.4

1. Exporting Tables : xlsx option.

A new option (xlsx) is now proposed when exporting tables, allowing to export tables with more than 256 columns.

2. Adjustable windows.

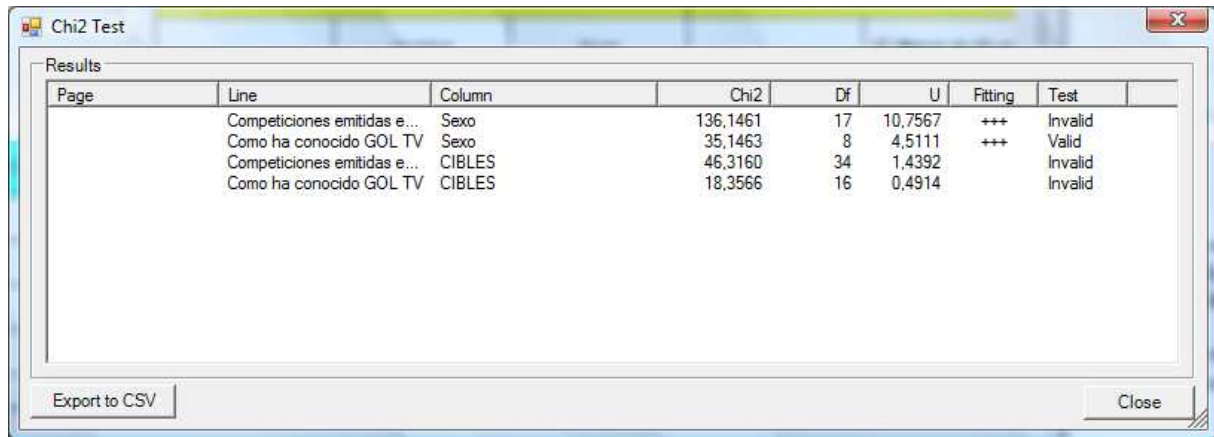
The « properties » window, and the « format » window are now adjustable, which is highly useful with very long data file names, or very long labels.



3. Chi squared test.

The chi squared test is now available (computed for the full table, while the already existing Chi2 test applies to each cell of the table). You get it with a right click when previewing the table (as for the gamma test). The results are given in a window, with possibility of exporting them in csv mode.

The results for every table are: the chi2 value, the number of degrees of freedom, the value of U, the goodness of fit (+, ++ and +++ when for the 90, 95 and 99% levels), and the indication of validity of the test.



Page	Line	Column	Chi2	Df	U	Fitting	Test
	Competiciones emitidas e...	Sexo	136,1461	17	10,7567	+++	Invalid
	Como ha conocido GOL TV	Sexo	35,1463	8	4,5111	+++	Valid
	Competiciones emitidas e...	CIBLES	46,3160	34	1,4392		Invalid
	Como ha conocido GOL TV	CIBLES	18,3566	16	0,4914		Invalid

Notes:

The table should include a line and a column Total, (obtained with the option T of the template, or NT, or A), weighted or not as the cells of the table.

There should not be more than one D option for one table in the templates in lines and columns.

The format of variables in lines and columns should include individual values, and not only sub-totals: chi2 is calculated for the sub-table made only with these lines and columns, and all the lines and the columns corresponding to the sub-totals are excluded from the calculation of chi2.

In the case of several totals (weighted or not as the cells of the table), they will be taken into account in the following order : at first NT (arithmetical totals), else T, else A (respondents). Thus, in case of multiple variables, the user has the choice between a Chi2 computed on the arithmetical totals of the table (when using the NT option), or on the logical totals (number of respondents, including or not the No Answers (T and A options)).