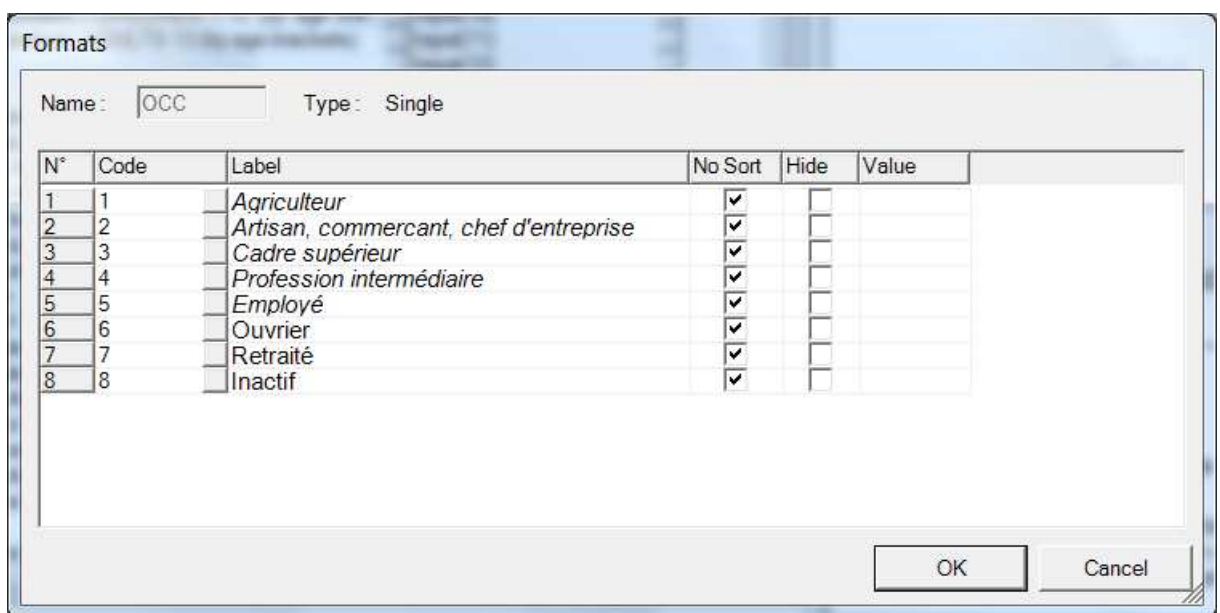


VoxcoTab Release 2.7

1. Formats : columns «No sort » and « Hide ».

To choose the options "No sort" and "Hide", it was until now necessary to check boxes one by one. With release 2.7, we can select several boxes and use the *Check All* option available with a right-click of the mouse



2. Default labels font.

A new option in the menu "Tools" allows choosing the default font which will be used by the new labels created in the formats.

This choice is valid at the level of the application, not only at the level of the study.

3. % Basis.

In a table request, we can now choose a base for percentages in another group than the one to which belongs the variable. The reference manual is thus completed so (in red):

When a variable A references, for a percentage base, a line in the table using variable B, then...

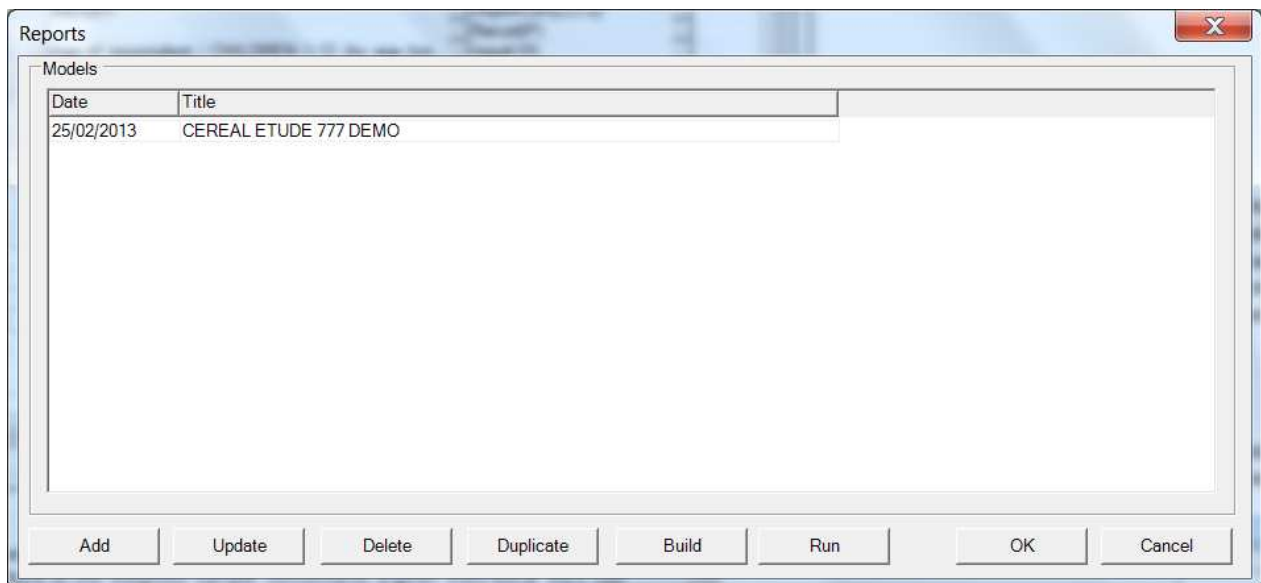
- *If variable A is Stage 1, then variable B must also be Stage 1.*
- *If variable A is Stage 2,*
 - *either variable B is Stage 2 in the same group i.e. they must both depend on the same Stage 1 variable.*
 - *Or, variable B is Stage 1, hence in another group than A.*

4. Triple S-xml Imports.

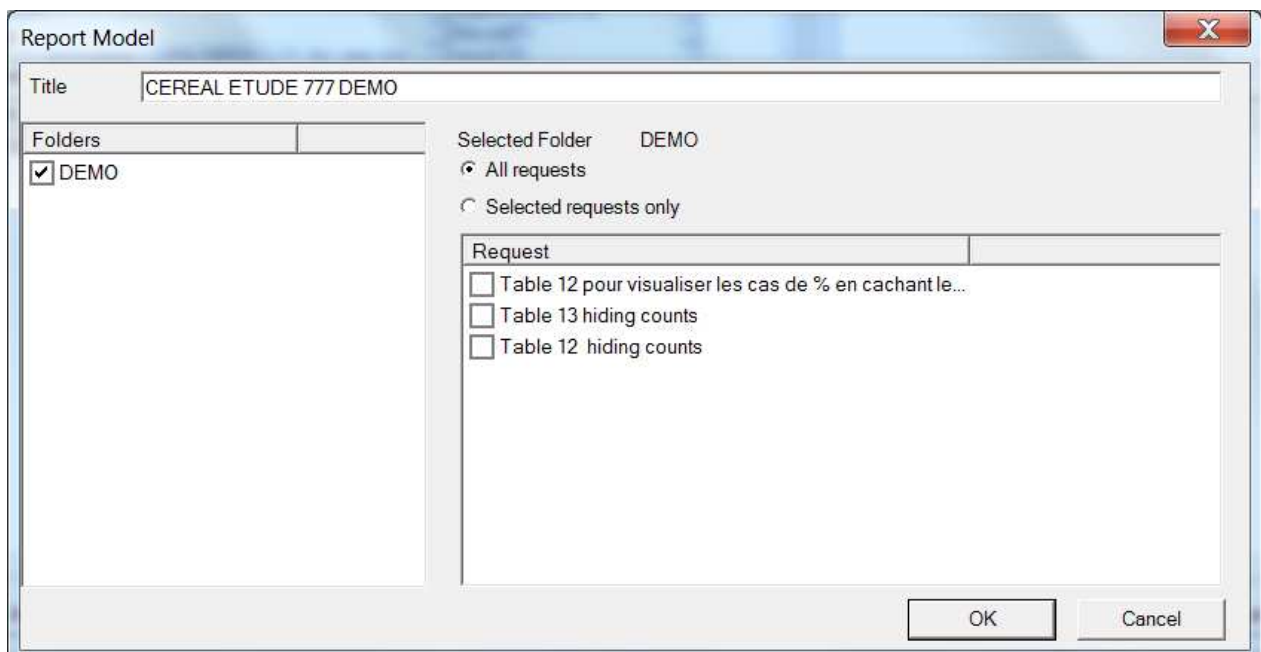
Until now, when, in the imported file, there was a wrong name for a variable (with blanks, special characters, etc.), the process of import stopped immediately. From the version 2.7, all the variables are imported, no control over their name is performed during the import. When all the dictionary is loaded, the check icon allows to detect the erroneous names of variables, the user has to correct them then manually to be able to continue the processing.

5. Reports.

A new module "Reports", in the menu Utilities, allows to facilitate largely reports built with Excel from tables supplied by CoTab.



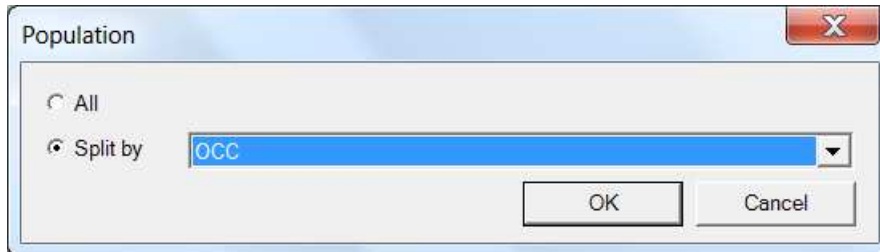
We select at first folders and requests of concerned tables.



The *Build* button supplies then an Excel file with a sheet Data containing the results of all the wanted tables, (one under the other), and a sheet Map. This file is named XXX.model.xlsx (XXX being the name given by the user).

The user can then build his report in sheets 3, 4 etc.

Then, the *Run* button allows creating the final report in another Excel file.



Remarks :

- 1) The report can have been prepared on a sample, and the report then generated with the complete file.
- 2) The report can be simultaneously generated on several populations, defined by a variable with format (as above). There will be then as many supplied Excel files as values for this variable.
- 3) To make the report, one Excel macro is delivered to the user, allowing to select easily tables shown in the Data sheet, respecting their font, style, and to paste them with the correct links in the chosen location.
- 4) The next version of the reference manual will include a complete chapter describing this new module.